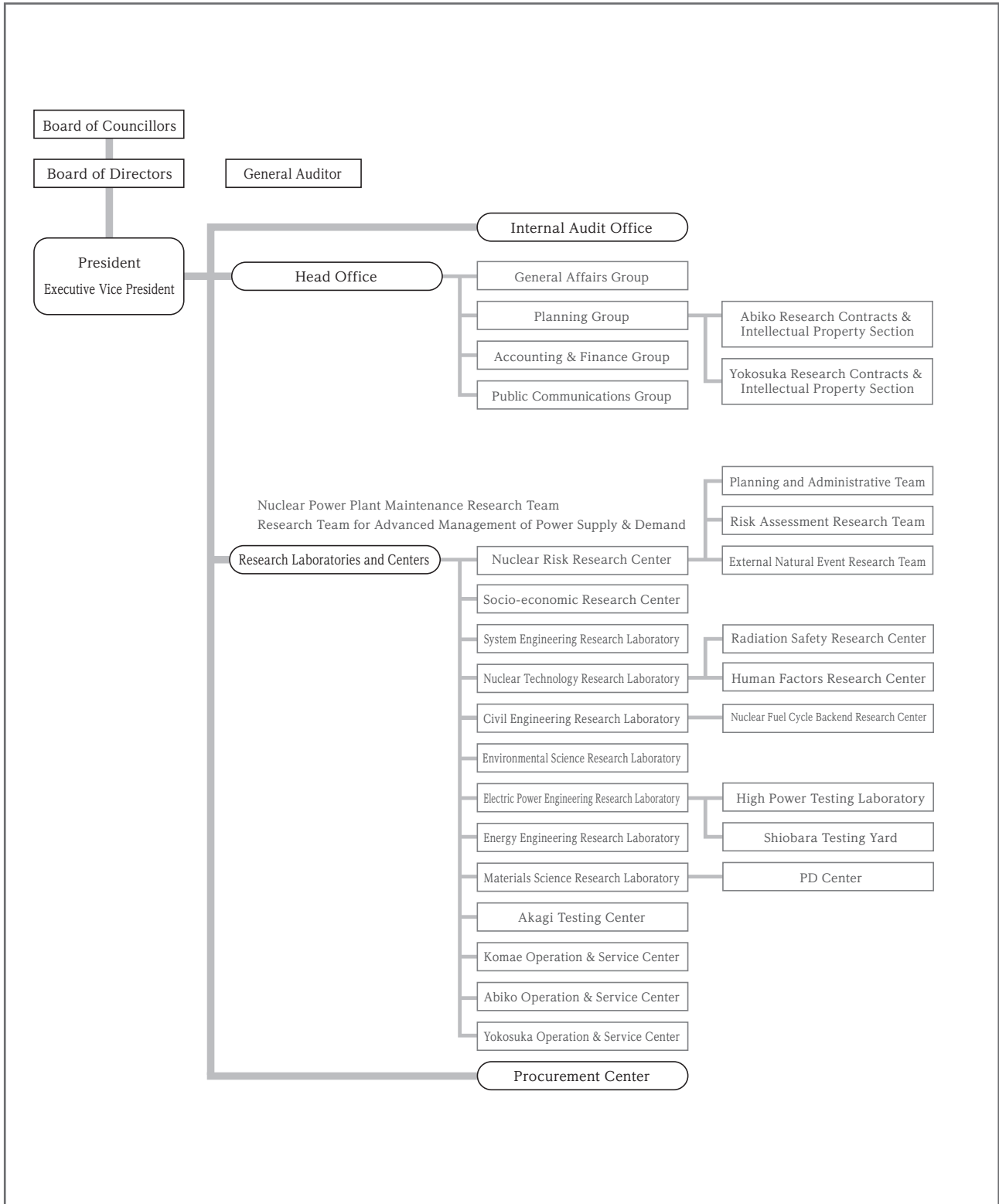
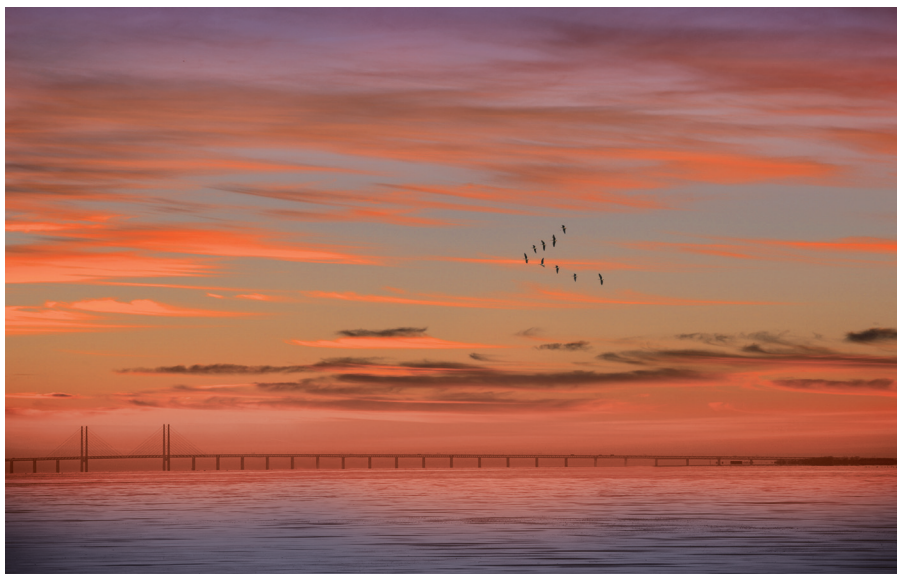


# Organization of the Central Research Institute of Electric Power Industry



Central Research Institute of Electric Power Industry

# Annual Research Report Fiscal Year **2014**



# Contents

## 1. Outline of Research Activities ..... 1

## 2. Major Research Results ..... 5

### Priority Subjects/Priority Subjects with Limited Terms

#### Establishment of Optimal Risk Management

Safety Assessment of LWR Systems .....	6
Assessment of Radioactive Material Diffusion and its Environmental Impact Evaluation .....	8
Establishment of Methodologies to Evaluate Fires in Nuclear Facilities .....	10
Assessment of Fragility of Nuclear Facilities due to External Natural Events .....	12
Assessment for the Effects of Natural Hazards on Nuclear Facilities .....	14
Quantitative Evaluation of Low-Dose Radiation Risk and its Reflection on Radiation Protection .....	16
Development and Systematization of Long-term Safety Assessment Technologies for Radioactive Waste Disposal .....	18
Development of Long-Term Storage Management Technologies for Spent Fuel .....	20
Development of Prediction Methods for Weather/Climate Impact on Electric Power Facilities .....	22
Establishment of Protective Measure Technologies against Damages to Overhead Transmission and Distribution Facilities Caused by Wind and Snow .....	24
Development of Lightning Risk Management Schemes .....	26
Well-functioning Electricity Market and Network Neutralization .....	28
Social and Institutional Analysis of Nuclear Business Environment in Japan .....	30
Climate Change Policy .....	32
Scientifically and Economically Rational Scenarios for Reducing CO <sub>2</sub> Emissions .....	34

#### Further Improvement of Facility Operations and Maintenance Technologies

Structural Integrity Evaluation of Reactor Pressure Vessels and Core Internals .....	36
Evaluation of Components and Piping Integrity in LWRs .....	38
Evaluation of Insulation Properties of Cables Used in Nuclear Power Plants .....	40
Development of Nondestructive Inspection Technologies for Components and Piping in Nuclear Power Plants .....	42
Development of Life Assessment Technology for High Temperature Structural Components of High Chromium Steels .....	44
Development of Assessment Techniques for Comprehensive Impact of Thermal Power on Atmospheric Environment .....	46
Development of Technologies for Increasing Use of Coal Ash .....	48
Development of Efficient Impact Assessment Methods for Ecosystems .....	50
Synthesis System of Numerical Analysis for Current and Sediments in River and Reservoirs .....	52
Development of a Maintenance Scheme for Aged Power Transmission and Distribution Facilities .....	54
Development of Soundness Assessment Techniques for Aged Overhead Transmission Steel Towers .....	56

<b>Development of a Supply/Demand Infrastructure for Next-Generation Electric Power</b>	
Improvement of Operation and Control Technologies to Diversify Fuel Types for Pulverized Coal-fired Power Plants .....	58
Improvement of Utilization Technology for Low-Grade Energy Resources .....	60
Assessment of System Security with High Penetration of Photovoltaics .....	62
Development of Precise Power Output Estimation and Prediction Techniques of Photovoltaic Power Generation .....	64
Development of ICT Infrastructure Building Techniques Based on General-purpose Communication Technology .....	66
Development of Technologies for Next-generation Power Distribution Networks .....	68
Assessment of the Value of Next-generation Demand Management .....	70
Development and Evaluation of Advanced Heat Pumps .....	72
Establishment of Evaluation Technologies for High Performance Secondary Batteries .....	74
<b>Basic Technology Subjects</b>	
Socio-economic Research Center .....	76
System Engineering Research Laboratory .....	78
Nuclear Technology Research Laboratory .....	80
Civil Engineering Research Laboratory .....	82
Environmental Science Research Laboratory .....	84
Electric Power Engineering Research Laboratory .....	86
Energy Engineering Research Laboratory .....	88
Materials Science Research Laboratory .....	90
<b>3. Major New Research Facilities</b> .....	<b>93</b>
<b>4. Activities</b> .....	<b>101</b>